

# Highlights

WORSHIP | PREPARE | SERVE | LEAD

## JULY 2011

### THE CONTENTS

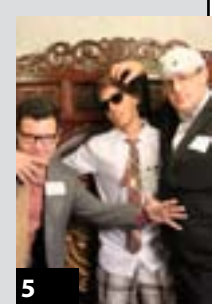
2  
WORSHIP

3-5  
PREPARE

6  
SERVE

7  
LEAD

8  
HELP AND ANSWERS  
MONTH AT A GLANCE  
ANNOUNCEMENTS



## California Dreamin'

*Dreams from the Bible. Dreams for our community.*

All-New Sermon Series  
July 2 - September 4

*More info on Page 2*



ST. ANDREW'S  
PRESBYTERIAN CHURCH



All-New Sermon Series  
July 2 - September 4

## California Dreamin'

Dreams from the Bible. Dreams for our community.

Stories of dreams and visions fill the pages of the Bible. Sometimes these dreams warn us of danger. Other times these dreams give us assurances of encouragement. God often speaks to us in our dreams because it is one of the few times we are still enough to listen. We are reminded that "where there is no vision, the people perish." This summer, let's discover what it means to keep the Biblical dream alive.

### Weekly Worship Service Times

Contemporary - Saturday, 5:30 p.m. and Sunday, 11:11 a.m.

Blended - Sunday, 9:30 a.m.

Classic - Sunday, 8:00 a.m.

## music opportunities

QUESTIONS? CONTACT THE MUSIC OFFICE, 949.574.2228

### Summer Choir

Everyone, high school age and above, is invited to sing in the Summer Choir for the Worship Services in July and August, beginning July 10 through August 28. There are no weeknight rehearsals and no interview is needed. Pick up a music folder and be in the Choir Loft no later than 7:15 a.m. on the Sunday(s) that you wish to sing.

Attire for Summer Choir is:

Men: collared, solid-color shirts. Slacks (no jeans).

Women: Sunday attire (hemline below the knee). Pantsuits okay (no jeans, no flip-flops).

### Rock Camp 2011

July 18-22, 9:00 a.m. - 12:00 p.m., for ages 7 - 17. The cost is \$175. Contact the Music Office, 949.574.2253.

### Music Lessons Available for Children/Adult Learners.

Lessons are available for children, teens, or adults; beginner – advance levels. Call Grace in the Music Office for info, 949.574.2233.

## this summer...



### Small Groups

Prepare to receive all that God has to offer each of us, as we follow Jesus Christ to lead lives that reveal God's goodness in your Summer Small Group. This summer, join in discussion about our summer reading book, John Ortberg's, *The Me I Want to Be*. Groups are still being formed. To find out what group is right for you, contact Malia Griffice, [maliag@sapres.org](mailto:maliag@sapres.org) or 949.574.2265.



### The Me I Want to Be Study Guide

Pick up the Summer study guide that accompanies our summer reading book, *The Me I Want to Be*, and begin a new phase of your life-journey with God. For seven weeks this summer, study and discuss in groups how to grow more into the people God created us to be. Each week the study guide offers small group questions, family discussion questions, and corresponding scripture reading. Copies available in the Welcome Center and in the Library/Bookstore.



### Beach Dreaming Fridays

Beginning July 8, 3:00 - 8:00 p.m. on the beach at 20th street, Newport Beach. All-Generations come enjoy the beach, get to know fellow Christ-followers from St. Andrew's, and build friendships that encourage us in following Jesus Christ to lead lives that reveal God's goodness. Contact Amberley, [amberleywolf@cox.net](mailto:amberleywolf@cox.net) or 714.884.3459 or Melanie, [emelart@yahoo.com](mailto:emelart@yahoo.com) or 949.887.9340.

## events and more

QUESTIONS? CONTACT BONNIE PRIETTO, 949.574.2262



### Fall 2011 New Member Class

The next class will be September 18, 2011. Contact Kelly Dickson, 949.574.2274 or [kellyd@sapres.org](mailto:kellyd@sapres.org) for more info or to register.

### Young Adults

If you are in your 20s or early 30s, join us for lunch after the 11:11 a.m. service on Sunday, July 17, and Sunday, August 21. Contact Kelly Dickson, 949.574.2274 or [kellyd@sapres.org](mailto:kellyd@sapres.org) for the location.



### Young Couples

If you are in your 20s and early 30s and are interested in getting to know other couples in your life stage, a couples small group will be meeting for dinners twice this summer. Contact Kelly Dickson, 949.574.2274 or [kellyd@sapres.org](mailto:kellyd@sapres.org) for more info.

## men

CHECK OUT THE **MEN'S PAGE** OF OUR WEB SITE FOR MORE "SPECIAL EVENTS" JUST FOR MEN AT [WWW.SAPRES.ORG](http://WWW.SAPRES.ORG).

### Men's Life Studies

All men are invited this fall, to study the book of Philippians through teaching and group discussion on Tuesday at 6:45 a.m. Contact Kelly Dickson, [kellyd@sapres.org](mailto:kellyd@sapres.org) for more information.

### Men's Fellowship Breakfast

Wednesday mornings, 7:00 – 8:00 a.m., in Dierenfield Hall. Open to men of all ages. For scheduled speakers, visit [www.sapres.org](http://www.sapres.org).

# PREPARE

## women

CHECK OUT THE **WOMEN'S PAGE** OF OUR WEB SITE FOR MORE "SPECIAL EVENTS" JUST FOR LADIES AT [WWW.SAPRES.ORG](http://WWW.SAPRES.ORG).

### Summer Women's Gatherings

Women in Management welcome you to join them for their infamous "Summer Suppers." Contact Lydia, [lsarandan@gmail.com](mailto:lsarandan@gmail.com).  
July 21: Lydia Sarandan's home | August 18: Donna Shockley's home.

### Scarf Party

Monday, August 1, 9:30 – 11:30 a.m. Bring a friend, a favorite scarf with a story, and a nifty way to tie it. If you have some scarves you'd be willing to donate to the St. Andrew's Romanian Mission, Dr. Lydia and team will take them as a love gift to the women receiving Bible Studies. We will send the scarves with a blessing and our prayers for the women. Hosted by the ladies of the Monday Women's Bible Study, at the home of Vicki Keltner: 1617 Tradewinds Drive, Newport Beach, CA 92660.  
RSVP to Fran Cashen by July 31, [francashen@cox.net](mailto:francashen@cox.net) or 949.735.5641.

### Coming this Fall for Women:

#### Women's Life Studies

This fall, we will have a Monday morning and a Thursday morning opportunity for women to study the book of Philippians, through teaching and group discussion. The start date is Monday, September 12, in the Chapel at 9:30 a.m. Further info will follow. Contact Kelly Dickson, [kellyd@sapres.org](mailto:kellyd@sapres.org).

#### Women's ReTREAT:

Ladies, TREAT yourself to a reTREAT during the weekend of Trick-or-Treating, October 28-30! Join us at Serra Retreat Center in Malibu for a weekend to develop new friendships, rest, and enjoy some time with the Lord. Contact Kelly Dickson, [kellyd@sapres.org](mailto:kellyd@sapres.org).

## tuition based programs

### Wonderful Weekdays Summer Camp

Space is still available! Seven weeks of fun for 1st - 6th graders, July 5 - August 19, Monday - Friday, 8:00 a.m. - 6:00 p.m.

|                   |                                 |  |
|-------------------|---------------------------------|--|
| Week 1: 7/5 - 8   | Into the Wild and Tame          | field trip: Santa Ana Zoo                      |
| Week 2: 7/11 - 15 | Fins, Feathers, Foliage and Fun | field trip: Bolsa Chica Wetlands and The Beach |
| Week 3: 7/18 - 22 | Let's Play and Eat              | field trip: Orange County Fair                 |
| Week 4: 7/25 - 29 | Round 'em up and move 'em out   | field trip: Wild West Carnival on campus       |
| Week 5: 8/1 - 5   | Express Yourself                | field trip: The Getty Museum                   |
| Week 6: 8/8 - 12  | Objects and Moving Parts        | field trip: California Science Center          |
| Week 7: 8/15 - 19 | The Final Wave                  | field trip: Wild Rivers Water Park             |

Every Monday includes a local field trip. Tuesday, Wednesday and Friday include swimming at Newport Harbor High School Pool. Contact Pam Gargan, 949.574.2281 or [pamg@sapres.org](mailto:pamg@sapres.org).

### WATCH After School Program

Registration for Fall 2011/2012 for children K - 6th grades. This program is available to working parents with students attending Mariners, Newport Heights, Kaiser and Woodland schools. The St. Andrew's school bus picks up the children and brings them to the St. Andrew's campus. Open Monday - Friday until 6:00 p.m. Wednesdays include Christian Education, 3:00 - 4:00 p.m. Facilitated homework Monday - Thursdays, 4:00 - 5:00 p.m. Contact Pam Gargan, 949.574.2281 or [pamg@sapres.org](mailto:pamg@sapres.org).

### Parent/Child Summer Playdays

There are a few spots left in our Monday class. Beginning July 11, join us anytime between 9:30 a.m. and 12:00 noon. Cost: \$80/child. Contact Susie Hamlin, 949.574.2241 or [susanh@sapres.org](mailto:susanh@sapres.org).

### Parent/Child Classes

September through June school year. Classes begin the week of September 13. There some openings in our Tuesday, Thursday and Friday classes. For more detailed info, visit the website, [www.sapres.org](http://www.sapres.org). Contact Susie Hamlin, 949.574.2241 or [susanh@sapres.org](mailto:susanh@sapres.org).

# PREPARE

## student ministries

JOIN OUR MAILING LIST! CONTACT: VICKI ALLEE: 949.574.2217

### Weekend Worship \ All Students

Our primary gathering for Student Ministries is the Sunday morning worship service. We encourage all students to attend a service with their families or with our leaders. Most of our students attend the 11:11 a.m. worship service. You are welcome to come and sit with our leaders and students on the right side of the sanctuary!

### Koi Groups \ Sermon Based Small Groups for Students

Our Sunday morning Koi Groups are not meeting over the summer. The small group (Koi group) component of our Prepare Ministry will become part of our mid-week program in the fall.



### Weekly Programs \ All Students

#### Junior High \ Asylum Pool Tours

Wednesday nights, July 6, 13, 20, 27, at 6:30 p.m.

Our summer theme is: *The Not So Notorious Stories of Notorious D, the Psalmist King* (Parent translation: we will be looking at some of the lesser-known stories of King David's life). For a list of locations, call 949.574.2217 or visit [www.lifeinthehouse.org](http://www.lifeinthehouse.org).



#### High School \ Refuge Bonus Tracks

Monday nights, July 11, 18, 25, 6:30 p.m., at 1225 Blue Gum Lane, Newport Beach.

We will be meeting Mondays for BBQ, Pool, Bible Study... Lots of fun!

Our summer theme is: *The Not So Notorious Stories of Notorious D, the Psalmist King*



#### College \ Haven

Tuesday Nights, 7:30 p.m., in the House.

July 5: Haven in the House

July 19: Haven in the House

July 12: 80's Dance Party/Movie Night

July 26: Haven in the Pool Bible Study

### Summer Trips

Sign up online, [www.lifeinthehouse.com](http://www.lifeinthehouse.com), for the following trips:

- Junior High Hume Lake Camp (grades 7 and 8 in the Fall) – August 7 - 13.
- High School Houseboats Camp at Lake Shasta (grades 9 -12 in the Fall) – July 31 - August 6
- College Briefing at Forest Home – September 2 - 5

## children and their families

CONTACT BRIEANA, [BRIEANAS@SAPRES.ORG](mailto:BRIEANAS@SAPRES.ORG), 949.574.2220

### This Summer in CrossTraining

Pier Pressure is our summer series aimed at helping all elementary students not just cope with but overcome the difficulty of negative peer pressure in their lives. This series captures the importance of having a deep foundation in Christ as the pressure of life's waves crash against us. This series uses I Corinthians 15:33 - "Do not be misled; Bad company corrupts good character."

### This Summer in TrainingWheels

Big Wave Discovery: A beach adventure for our preschool TrainingWheels kids where they discover Biblical answers about God, Jesus, the Bible, Prayer, the Church and more! Join us at Sunday School for waves of God's love and fun this summer!

### Summer Small Group Leaders Needed

Would you like to be a summer small group leader for elementary age children? Sign up at the Children's Welcome table for one or two sessions.

### Dadz Inc Camp Surf

July 15 – July 17, for children between the ages of 3 and 14 years.

Dads: spend the weekend with your kids camping on the beach in San Diego! YMCA Camp will provide the food and activities so that you can enjoy this time with your kids. Cost is \$115 per person, space is limited. Contact Brieana Searcy, 949.574.2220 or [brieanas@sapres.org](mailto:brieanas@sapres.org).

# SERVE

## outreach

QUESTIONS? CONTACT HILARY SCHWIND, 949.574.2271

### Bible Donations

We are always in need of Bibles to give to the men and women of NorthEast of the Well, Teen Challenge, and Heritage House. Contact Lexi Larison, [Lexil@sapres.org](mailto:Lexil@sapres.org) or 949.574.2273.

### New Homeless Ministry

If you are interested in preparing food for the homeless and sharing meals together with our neighbors at Lions Park, or interested in being on a prayer team for this ministry, please contact Bronwen Newcott, [bronwenbutter@gmail.com](mailto:bronwenbutter@gmail.com).

### MIKA Christian Surf Club

July 9, August 13, September 10. We need people to volunteer to donate lunch. Contact Caryn Kallal, [caryn@mikacdc.org](mailto:caryn@mikacdc.org).

### Teen Challenge

Disciplers and mentors needed for the staff and interns. Contact Hilary Schwind, [hilarys@sapres.org](mailto:hilarys@sapres.org) or 949.574.2271.

### Serving at NorthEast of the Well

Monday nights, 6:00 - 7:00 p.m., in Stewart Lounge and continued, 7:00 - 8:00 p.m., across the street at the Frei's. Contact Emily Schilling, [eschill42@msn.com](mailto:eschill42@msn.com) or 949.929.4295.

### Juvenile Hall Ministry

July 11, 6:30 - 8:30 p.m., at Juvenile Hall. Orientation meeting for those interested in ministering to incarcerated youth. Contact Rick Johnson, [chaplainrj@sbcglobal.net](mailto:chaplainrj@sbcglobal.net) or 714.935.6365.

### Grand Canyon Mission Trip

November 19 -24, 2011. Come reveal God's goodness to the Havasupi tribe. Info meeting being held in mid-July. Contact Jacqueline Johnson, [jacqueline@sapres.org](mailto:jacqueline@sapres.org).

### Kenya Mission Trip

A medical and worship focused mission trip is forming this January. If you are interested, contact Laura Johnson, 949.574.2268.

## care

QUESTIONS? CONTACT JANICE WULFKUHLE, 949.574.2258

### Memory Loss Caregivers Support Group

Do you care for a loved one who is memory challenged? Next meeting is July 19, 3:00 - 5:00 p.m., in Room B014A. Contact Roger Riley, 949.697.8707 or [msriley@roadrunner.com](mailto:msriley@roadrunner.com); or Donna Shockley, 949.675.1904 or [dshock@earthlink.net](mailto:dshock@earthlink.net).

### NAMI Support Group

This mental illness support group meets the first and third Sunday of every month, 6:30 - 8:00 p.m., in Stewart Lounge. Contact Karen Natlan, 949.644.5345. **NAMI Family-to-Family Education Program:** A free 12 week class on Tuesdays, begins July 12, 7:00 - 9:00 p.m. Registration required. Contact Khang Tran, 714.544.8488 x101.

### O.C. Aspergers Support

Third Monday of each month, 7:00 p.m. in Dierenfield Hall. For those with autism spectrum and their families. Contact Nancy Kossky, 714.227.8819 or [ocasupport@gmail.com](mailto:ocasupport@gmail.com).

### The Deacons are here to serve you!

Remember us if you are in the hospital and would like a visit; need food brought in while you recuperate; need a ride to a doctor appointment or to church; need prayer; or if you need to talk to someone. Contact a Deacon, 949.574.2266 or [deacons@sapres.org](mailto:deacons@sapres.org).

### Stephen Ministry

A caring, confidential Christian friend to walk alongside you during a difficult time. Women contact Donna Shockley, 949.675.1904, or Carol Kanode, 714.847.8412; men contact Art Wardner, 714.731.6538.

### Growing in Christ Through Grief

To register for fall classes, contact Betty Adkinson, 949.673.5725.

### Divorce Recovery Workshop

A seminar for divorced and separated persons of all ages. To register online for the six fall Thursday evening sessions featuring workshop speaker Dr. John Fry, September 15 - October 20, go to [www.sapres.org/support/divorce-recovery](http://www.sapres.org/support/divorce-recovery) or email [drw@sapres.org](mailto:drw@sapres.org) or 949.574.2222.

# LEAD



**ST. ANDREW'S**  
PRESBYTERIAN CHURCH

### MISSION

Following Jesus Christ  
to Lead Lives  
that Reveal God's Goodness

### STRATEGY

Worship  
Prepare  
Serve  
Lead

### MISSION MEASURES

Unexpected Grace  
Unstoppable Faith  
Unshakeable Hope  
Unfailing Love  
Unfathomable Peace  
Unrestrained Generosity  
Uncommon Friendship  
Unquenchable Joy

### VALUES

Relational Ministry  
*because real faith moves at the speed of friendship*  
Extreme Hospitality  
*because real hope goes the extra mile*  
All-Generations Community  
*because real love involves the whole family of God*  
Living Biblically  
*because real followers of Jesus are students of His Word and servants of His way*

### STRATEGY ICON





Same look, new taste!  
Come give us a try!

We're outside the Sanctuary entrance!

## HELP AND ANSWERS

**Check out our website:** [www.sapres.org](http://www.sapres.org)

**Email us your questions:** [info@sapres.org](mailto:info@sapres.org)

**Visit our church blog:** [www.highlightslive.com](http://www.highlightslive.com)

Our blog is a great way to see what others at St. Andrew's are doing and to share what you are doing with others! Visit the site, click "Highlight What You're Doing!" and submit your photos and stories.

### Welcome to our guests!

- Leaders are available at the foot of the cross (in the Sanctuary) after each service to pray confidentially with you.
- Do you have a personal need? Need prayer? Deacons are available at the Deacon Desk to assist you.
- Aids for the hearing impaired are available in the Usher's Room.
- For more info, please stop by our Welcome Center located in the Plaza.

### Library Hours

Sunday: 9:00 a.m. – 11:11 a.m. A volunteer will be present between the three services.

Monday – Friday: 8:30 a.m. – 5:00 p.m., Self service.

## MONTH AT A GLANCE

| <u>Date</u>       | <u>Time</u>            | <u>Event</u>                           |
|-------------------|------------------------|--|
| Friday, July 8    | 3:00 - 8:00 p.m.       | Beach Dreamin' Friday (Info on Page 3) |
| Saturday, July 9  | Info on Page 6         | MIKA Christian Surf Camp               |
| Monday, July 11   | 9:30 a.m. - 12:00 noon | Parent/Child Summer Playdays begin     |
| Monday, July 11   | 6:30 - 8:30 p.m.       | Juvenile Hall Ministry                 |
| Thursday, July 14 | 9:30 - 11:00 a.m.      | Teen Challenge Graduation              |
| July 15 - 17      | Info on Page 5         | Dadz Inc. Camp Surf                    |
| Sunday, July 17   | Info on Page 3         | Young Adults Lunch                     |
| July 18 - 22      | Info on Page 2         | Rock Camp 2011                         |
| Tuesday, July 19  | 3:00 - 5:00 p.m.       | Memory Loss Caregivers Support Group   |
| Thursday, July 21 | Info on Page 4         | Women in Management Summer Supper      |

## ANNOUNCEMENTS

### *In Memoriam*

Carroll Alm passed away on June 14.

### Financial Update

June 26, 2011

**2011 Operating Budget . . . . . \$6,004,380**

YTD Income Budgeted . . . . . 2,564,943

YTD Income Received . . . . . 2,630,269

### Building the Future Update

June 26, 2011

**Current BTF Outstanding Debt . . . \$11,280,372**

YTD Required Principal & Interest . . . . . 422,405

YTD BTF Income/Donations Received . . . . . 173,170